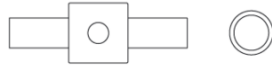


constructiv CLIC

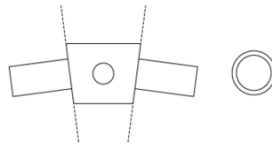


The constructiv CLIC system family Magnetic push-fit connection of connector/rod. The connectors are natural-anodized aluminium cubes, the attachment pieces are made of galvanized steel, the connectors are made of natural-anodized aluminium tubing into which two magnets have been pressed. The assembly is child's play. The modular elements come together with a soft click, creating the modular architecture system. Users like the simple, self-explanatory construction principle; viewers admire the austere appearance; designers appreciate the graphic and architectonic versatility. For both planners and users, the planning software ?CLIC IT? provides a convenient means of developing complex spatial structures and visualising them in three dimensions.

constructiv CLIC



constructiv CLIC Rund



constructiv CLIC Office



PropertiesOrthogonal orientation. Assembly without tools. Filigree and lightweight. Rapid assembly and dismantling. For two and three-dimensional presentations. Can be expanded as required, up to the definition of entire rooms.

ApplicationTrade fair, display, exhibition, shop

DimensionsConnector 15 x 15 x 15, tube Ø 10

Grid systemsA600, A300

PropertiesTrapezoidal orientation. Permits arched and coiled structures included self-contained rotundas with an outer diameter of 5.2m.

ApplicationTrade fair, display, exhibition, shop

DimensionsConnector 15/19 x 15 x 15, tube Ø 10

Grid systemsInterior radius A600, exterior radius A680, depth A300

PropertiesUnconventional shelving and furniture system with large equipment depth - storage containers, integral lighting, sloping shelves, etc. - and a space-defining architecture system.

ApplicationOffice, furniture

DimensionsConnector 15 x 15 x 15, tube Ø 10

Grid systemA700